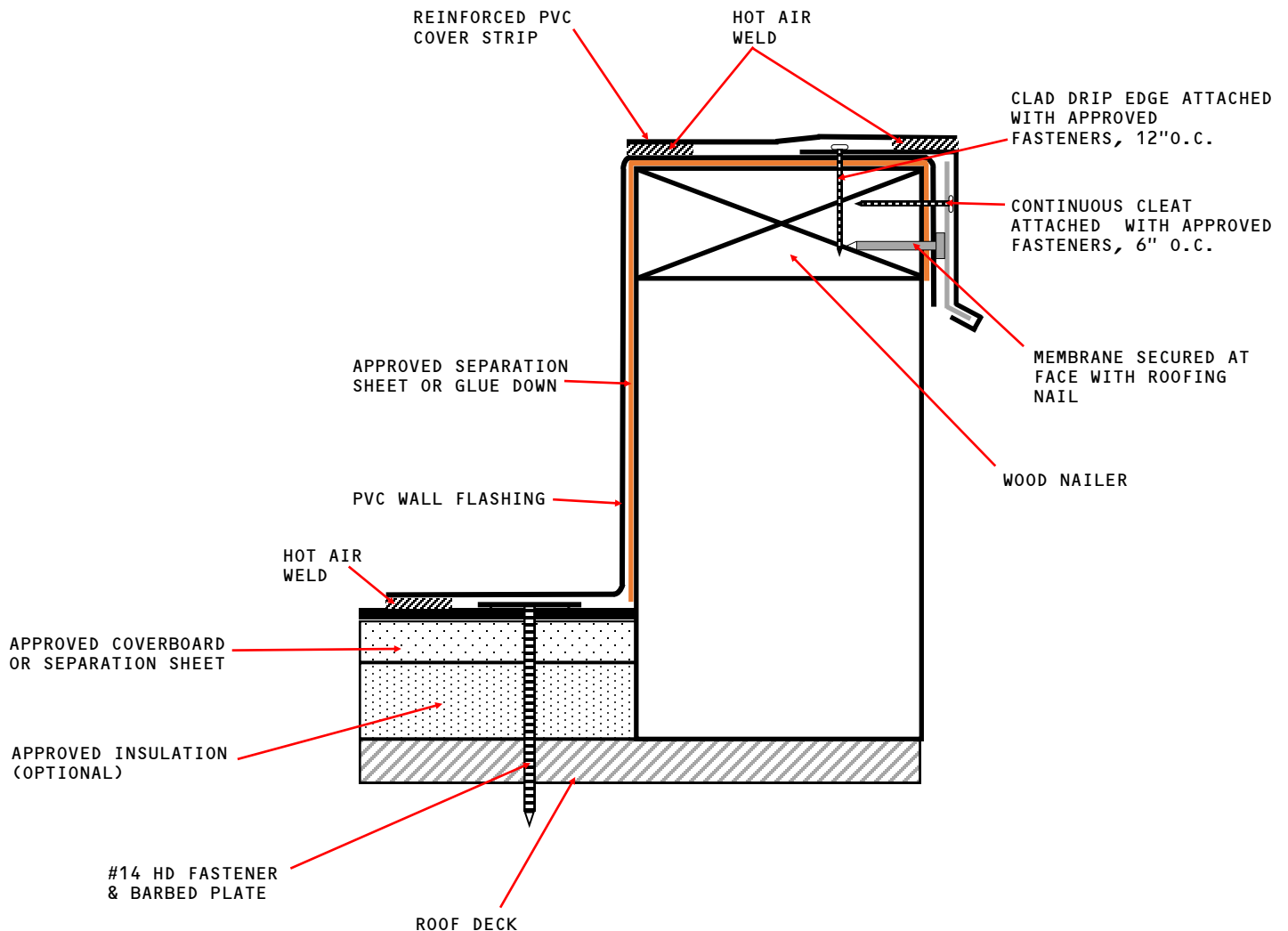




## Wall Cap - Clad Drip Edge Cleated Detail PT-GC 3



**NOTES:**

1. REFER TO MECHANICALLY FASTENED OR GLUE DOWN TALL WALL DETAILS FOR ELEVATIONS OVER 18"
2. WOOD NAILER ATTACHED ACCORDING TO LOCAL BUILDING CODE
3. CLEAT REQUIRED ON EDGE METAL WITH FACE GREATER THAN 5"
4. FOLLOW SUPPLIER INSTRUCTION FOR COPING METAL INSTALLATION