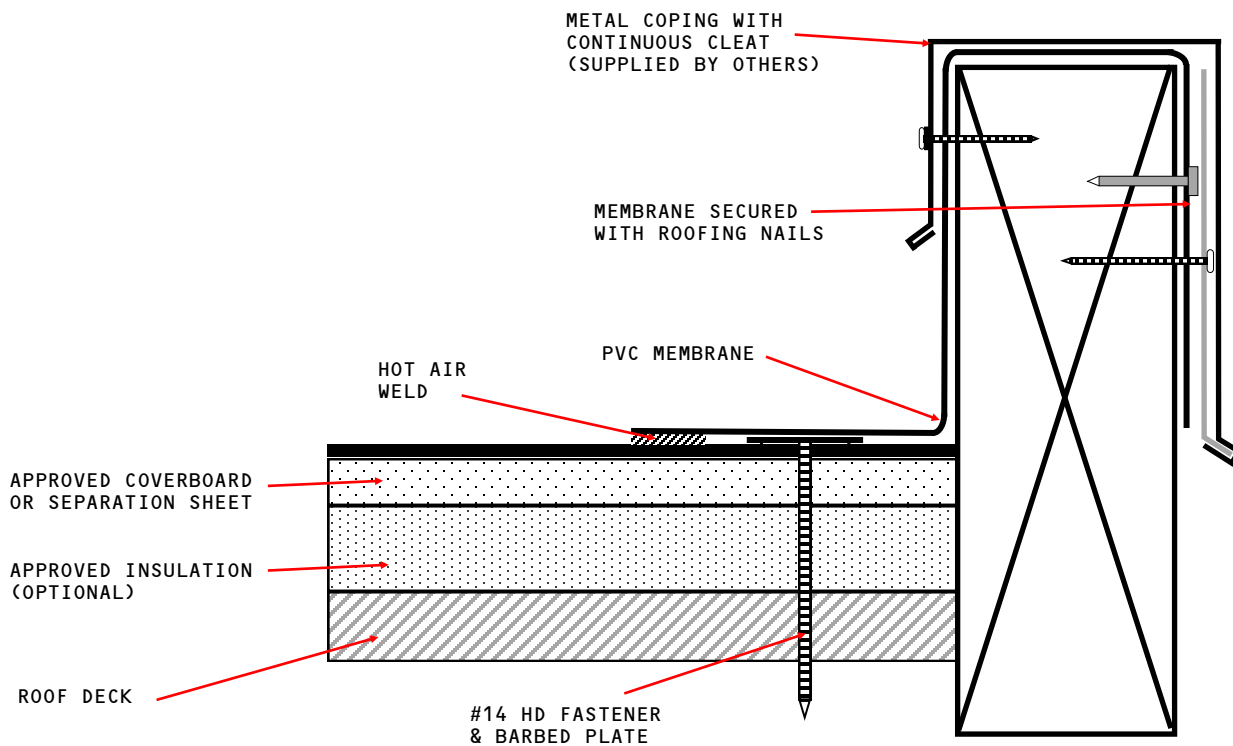




PHOENIX
PRODUCTS™

Raised Fascia Edge – Cleated Detail PE-GC 9



NOTES:

1. WOOD NAILER ATTACHED ACCORDING TO LOCAL BUILDING CODE
2. CLEAT REQUIRED ON COPING METAL WITH FACE GREATER THAN 5"
3. FOLLOW SUPPLIER INSTRUCTION FOR COPING METAL INSTALLATION
4. REFER TO MECHANICALLY FASTENED OR GLUE DOWN TALL WALL DETAILS FOR ELEVATIONS OVER 18"