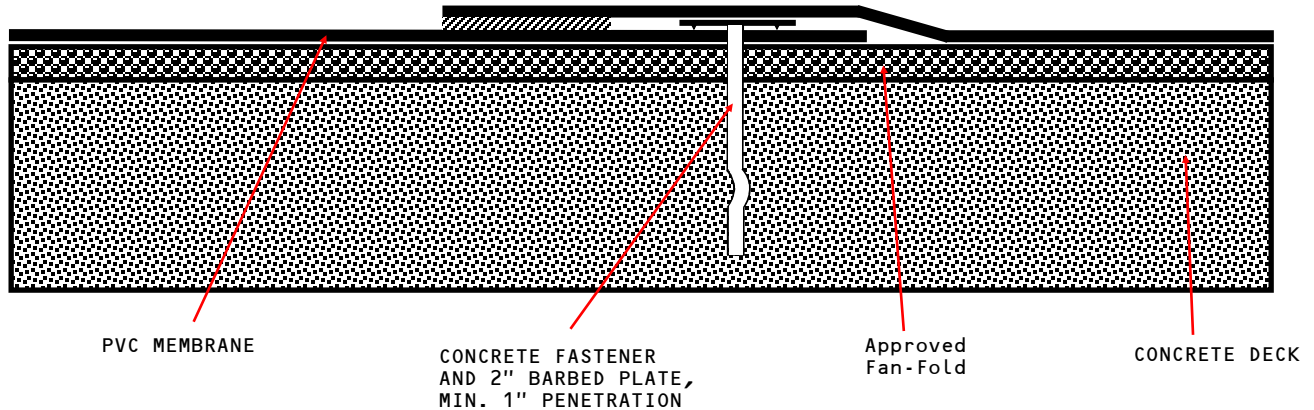




PHOENIX
PRODUCTS™

MF-FF-C
Quick Spec

Mechanically Fastened Membrane - Fan-Fold - Concrete Deck (New or Tear Off)



APPROVED INSULATION: Any UL Classified Expanded and Extruded Polystyrene Fanfold min 1.5 lb density and minimum 1/2" thick.

NOTES:

1. Attach Fan-Fold with Concrete Fasteners and 3" Steel Insulation Plate. Refer to Detail Drawing "Fan-Fold Fastening Pattern MF-6". Minimum 1" penetration.
2. There maybe slope restrictions regarding Fire Ratings. Please contact the Phoenix Technical Department for Fire Rating restrictions if required.